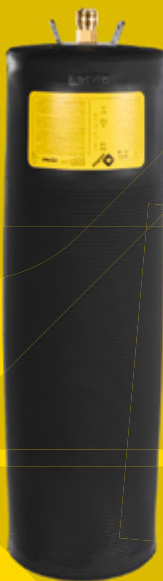


ENGLISH

PRODUCT CATALOGUE
**Inspection, Sealing
& Rehabilitation Solutions**



vetter

Special constructions

VETTER – Always one idea ahead!

- Different materials
- Many sizes and shapes possible
- Short delivery time
- Numerous application areas

It is precisely in the industrial sector that you will often find tool applications especially tailored to individual requirements. In this respect such aspects as flexibility and versatility are in the forefront. Pneumatic constructions are developed and produced in cooperation with the customer. The customer has numerous possibilities available with respect to material, operating pressure, size, shape, inflation connection, resistance etc.



Contents

Pipe Sealing & Testing plugs

Mini pipe sealing plugs	Page 6
Mini test sealing plugs	Page 7
Pipe sealing plugs	Page 8
Test sealing plugs	Page 10
Air pressure testing – Round profiles	Page 12
Cone bags	Page 14
Bypass bags	Page 16
Pipe sealing bags CR	Page 18

Flexible packers

Lateral packers / Extended range packers	Page 20
Bendy packers	Page 22
Flexible packers with wheelsets	Page 24

Accessories

Accessories	Page 26
-------------	---------

Vetter resistance list

Temperature resistance, materials and resistance lists	Page 30
--	---------

Industrial Pneumatics

Variable, flexible, sealed tight

We have been the leading supplier of industrial pneumatics for decades.

Our entire portfolio is developed and tested tailor-made for professional users. That is how we guarantee you the maximum functionality and safety of our products – even under extreme conditions. You can count on it.



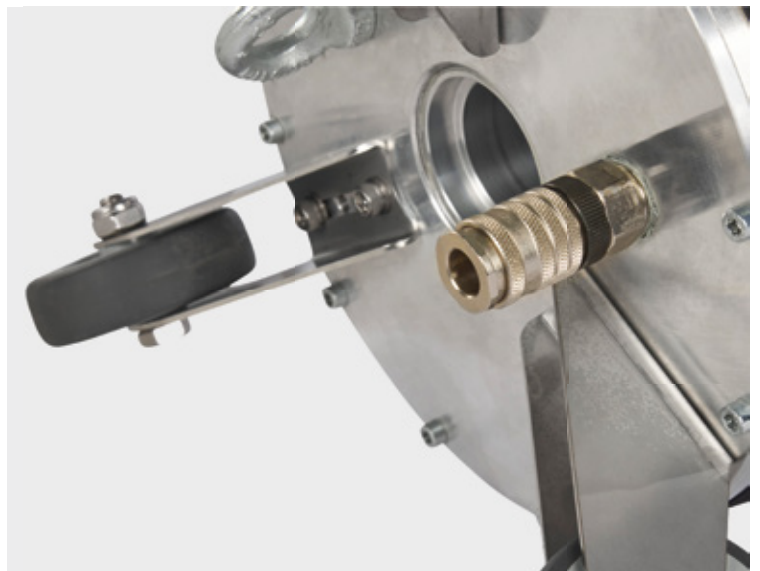
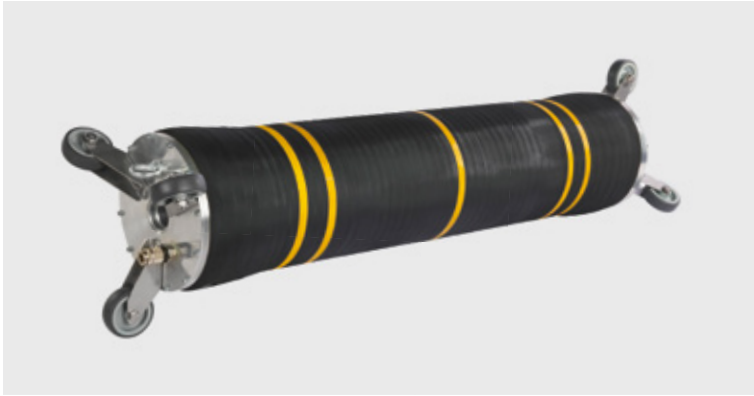
Vetter knows you.

About 50 years of experience at the sewage market makes Vetter a partner you can rely on. We apply our experience and expertise to the constant refinement of our products. Your benefit: Sophisticated industrial pneumatics help you to get everything under control. So, you can fully concentrate on your work.



Vetter supports you.

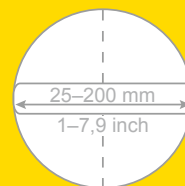
Highly specialised pneumatics is our core business. Benefit from our complete range of industrial pneumatic products – developed by our engineers in Germany. At Vetter, we are committed to a wide variety of pressure levels, materials and designs.



Mini pipe sealing plugs

The small flexible ones

- Extremely short design
- Maintains counterpressure up to 1 bar (14.5 psi)
- Very high expansion
- Simple handling



With their short design, mini pipe sealing bags are particularly suitable for sealing building connection lines. In addition, they are always used when flexibility or the ability to negotiate bends is required. This is frequently the case for the HVAC and plumbing sector as well as for oil and gasoline separation tests according to DIN 1999 T 100. Here you are always optimally equipped with Vetter's extensive range of mini pipe sealing bags. Also available with tire valve (as accessory).



Technical data

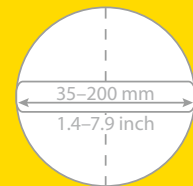
Standard test back pressure of 10 mWC (14.5 psi)

Mini pipe sealing bags 2.5 bar/36.25 psi	Pipe diameter mm/inch	Diameter mm/inch	Cylinder length mm/inch	Total length mm/inch	Air requirement approx. litre/cu. ft.	Weight approx. kg/lbs
RDK 2.5/4 1492000200	25-40 1-1.6	23 0.9	100 3.9	150 5.9	0.6 0.02	0.12 0.26
RDK 3.5/7 1492000300	35-70 1.4-2.8	32 1.3	200 7.9	250 9.8	2.7 0.10	0.20 0.44
RDK 7/10 1492000400	70-100 2.8-3.9	65 2.6	150 5.9	200 7.9	6.7 0.24	0.35 0.77
RDK 10/15 1492000500	100-150 3.9-5.9	85 3.3	150 5.9	200 7.9	8 0.28	0.45 0.99
RDK 15/20 1492000600	150-200 5.9-7.9	135 5.3	200 7.9	250 9.8	15.2 0.54	0.6 1.32

Mini test sealing plugs

The small ones with duct

- Extremely short design
- Maintains counterpressure up to 1 bar (14.5 psi)
- Very high expansion
- Valve extension for better handling



Vetter's mini test sealing bags are the right choice for the inspection, maintenance or cleaning of pipes or ducts as well as for leak tests. The bags with 2.5 bar (36.25 psi) are great for testing, sealing, bypassing and diverting profiles up to 300 mm (12 inch).



Technical data

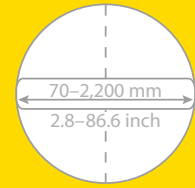
Standard test counter-pressure of 10 mWC (14.5 psi)

Mini pipe testing plugs 2.5 bar/36.25 psi	Bypass Ø inch	Pipe diameter mm/inch	Diameter mm/inch	Cylinder length mm/inch	Total length mm/inch	Air requirement approx. litre/cu. ft.	Weight approx. kg/lbs
PDK 3.5/7 1492000900	M6	35-70 1.4-2.8	32 1.3	200 7.9	250 9.8	2.7 0.10	0.4 0.88
PDK 7/10 1492001000	1/4"	70-100 2.8-3.9	65 2.6	150 5.9	200 7.9	6.7 0.24	0.45 0.99
PDK 10/15 1492001100	1/2"	100-150 3.9-5.9	85 3.3	150 5.9	200 7.9	8 0.28	0.6 1.32
PDK 15/20 1492001200	1"	150-200 5.9-7.9	135 5.3	200 7.9	250 9.8	15.2 0.54	1.5 3.31

Pipe sealing plugs

The classic products

- Large product range
- Very flexible due to the material
- Simple handling since light and short



Vetter pipe sealing bags close drainage channels quickly and safely. A special feature: The user can freely adjust the contact pressure on the pipe wall from 1.5 to 2.5 bar (21.75–36.25 psi). Areas of application include repair, inspection, cleaning and maintenance of sewer pipes. But the bags also efficiently and reliably prevent the backflow of wastewater in the event of pipe bursts or floods. With these versatile applications, professionals in many industries trust pipe sealing bags from Vetter. These include, for example, road construction and civil engineering companies, sewer renovation companies, water associations and the manufacturing industry.

By the way: Vetter pipe sealing bags are perfect for leaktightness testing according to DIN EN 1610.



Technical data

**RDK 2.5 bar - test counter pressure of 10mWC (14.5 psi),
RDK 1.5 bar - test counter pressure of 5 mWC (7.25 psi)**

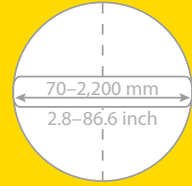
Pipe Sealing Bags		Pipe diameter <i>mm/inch</i>	Diameter <i>mm/inch</i>	Cylinder length <i>mm/inch</i>	Total length <i>mm/inch</i>	Air requirement approx. <i>litre/cu. ft.</i>	Weight approx. <i>kg/lbs</i>
RDK 7/15 1440000301	2.5 bar 36.25 psi	70–150 2.8–5.9	68 2.7	300 11.8	345 13.6	13.3 0.47	0.5 1.10
RDK 10/20 1440011700	2.5 bar 36.25 psi	100–200 3.9–7.9	90 3.5	250 9.8	295 11.6	25 0.88	0.7 1.54
RDK 15/30 1440000601	2.5 bar 36.25 psi	150–300 5.9–11.8	145 5.7	350 13.8	395 15.6	70 2.24	1.5 3.31
RDK 20/40 1440020100	2.5 bar 36.25 psi	200–400 7.9–15.7	195 7.7	650 25.6	700 27.6	224 7.91	3.1 6.84
RDK 20/50 1440016700	2.5 bar 36.25 psi	200–500 7.9–19.7	195 7.7	750 29.5	795 31.3	329 11.62	4 8.82
RDK 30/60 1440000801	2.5 bar 36.25 psi	300–600 11.8–23.6	295 11.6	735 28.9	780 30.7	507.5 17.92	6.8 14.99
RDK 50/100 1440028200	2.5 bar 36.25 psi	500–1,000 19.7–39.4	450 17.7	1,110 43.7	1,155 45.5	1,987 70.17	17.6 38.81
RDK 60/120 1480001901	1.5 bar 21.75 psi	600–1,200 23.6–47.2	580 22.8	1,320 52.0	1,365 53.7	2,475 87.4	27.6 60.86
RDK 80/160 1492000700	1.5 bar 21.75 psi	800–1,600 31.5–63	780 30.7	2,000 78.7	2,050 80.7	3,410 120.42	69 152.15
RDK 80/220 1492000800	1.5 bar 21.75 psi	800–2,200 31.5–86.6	780 30.7	3,200 126	3,250 128	5,457 192.71	110 242.55

Note: Vetter's oil resistant CR version of the sealing bags is also available. See page 18.

Test sealing plugs

The testers

- **Lighter than test bag with inner tube**
- **Flexible, robust design**
- **For tests according to DIN EN 1610**



The extremely robust Vetter test sealing bags combine three functions in one bag: They seal, facilitate testing with water or air and can be used for bypassing or to divert. The inner hoses also make the bags more flexible than comparable bags with inner tubes. These properties enable you to adapt the test bags flexibly to the most varied pipe materials. Small unevenness is also compensated by the bags.

The areas of application include:

- Diversion of waste water from leaking sewers
- Damming and metered drainage of liquids
- Tightness tests according to DIN EN 1610 with air or water
- Control of pipeline sections

The test bags are equipped with one or more filling coupling(s) and retaining lugs, depending on the type of bag. The connections with male threads allow a free choice of accessories. The size of the connections depends on the type of bag.



Air pressure test



Technical data

**PDK 2.5 bar – test counter-pressure of 10 mWC (14.5 psi),
PDK 1.5 bar – test counter-pressure of 5 mWC (7.25 psi)**

Test sealing bags	Operating pressure	Bypass Ø	Pipe diameter	Diameter	Cylinder length	Total length	Air requirement approx. litre/cu. ft.	Weight approx. kg/lbs
	bar/psi							
PDK 7/15 1441001201	2.5 36.25	1 x 1/2" OT	70–150 2.8–5.9	68 2.7	350 13.8	395 15.6	14 0.49	1 2.21
PDK 10/20 1441018502	2.5 36.25	1 x 1/2" OT	100–200 3.9–7.9	90 3.5	510 20.1	555 21.9	40.3 1.42	1.3 2.87
PDK 15/30 1441022801	2.5 36.25	1 x 1/2" OT	150–300 5.9–11.8	145 5.7	460 18.1	505 19.9	87.5 3.09	3 6.62
PDK 20/40 1441018600	2.5 36.25	1 x 1/2" OT	200–400 7.9–15.7	195 7.7	640 25.2	685 27.0	225 7.95	5.3 11.69
PDK 20/50 1441031200	2.5 36.25	1 x 1/2" OT	200–500 7.9–19.7	195 7.7	750 29.5	795 31.3	333 11.76	6.5 14.33
PDK 30/60 1441018701	2.5 36.25	1 x 1/2" OT	300–600 11.8–23.6	295 11.6	735 28.9	815 32.1	471 16.63	9.6 21.17
PDK 50/100 1481003501	1.5 21.75	1 x 2" OT	500–1,000 19.7–39.4	450 17.7	1,110 43.7	1,155 45.5	1,475 52.09	23 50.72
PDK 60/120 1481009501	1.5 21.75	1 x 2" OT	600–1,200 23.6–47.2	580 22.8	1,320 52.0	1,365 53.7	2,425 85.64	34.2 75.41
PDK 80/160 1492001300	1.5 21.75	1 x 4" OT	800–1,600 31.5–63.0	780 30.7	2,000 78.7	2,150 84.6	3,410 120.42	107 235.94
PDK 80/220 1492001400	1.5 21.75	1 x 4" OT	800–2,200 31.5–86.6	780 30.7	3,200 126.0	3,350 131.9	5,457 192.71	235 518.18

**With one RDK and one PDK air pressure tests can be performed.
For water pressure tests two PDK but no RDK are needed.**

Air pressure test – Round profiles

Sets 2.5 bar (36.25 psi) + Sets 1.5 bar (21.75 psi)

For pipes 70–1,000 mm (2.7–40 inch)			70– 150	100– 200	150– 300	200– 400	200– 500	300– 600	500– 1,000
RDK 7/15	1440000301	2.5 bar 36.25 psi	1						
PDK 7/15 FLEX with duct 1 x 1/2" OT	1441001201	2.5 bar 36.25 psi	1						
RDK 10/20	1440011700	2.5 bar 36.25 psi		1					
PDK 10/20 with duct 1 x 1" OT	1441018502	2.5 bar 36.25 psi		1					
RDK 15/30	1440000601	2.5 bar 36.25 psi			1				
PDK 15/30 with duct 1 x 2" OT	1441022801	2.5 bar 36.25 psi			1				
RDK 20/40	1440020100	2.5 bar 36.25 psi				1			
PDK 20/40 with duct 1 x 2" OT	1441018600	2.5 bar 36.25 psi				1			
RDK 20/50	1440016700	2.5 bar 36.25 psi					1		
PDK 20/50 with duct 1 x 2" OT	1441031200	2.5 bar 36.25 psi					1		
RDK 30/60	1440000801	2.5 bar 36.25 psi						1	
PDK 30/60 with duct 1 x 2" OT	1441018701	2.5 bar 36.25 psi						1	
RDK 50/100	1440028200	2.5 bar 36.25 psi							1
PDK 50/100 with duct 1 x 2" OT	1481003501	1.5 bar 21.75 psi							1

Air test adapter

Air test adapter 1/2" IT	1481023600		1						
Air test adapter 1" IT	1481023500			1					
Air test adapter 2" IT	1481023400				1	1	1	1	1

Accessories for inflation

Inflation hose 10 m (32 ft.), yellow	1600029900	2.5 bar 36.25 psi	2	2	2	2	2	2	2
Single fitting controller	0250005701	2.5 bar 36.25 psi	1	1	1	1	1	1	1

Additional accessories as an option

Inflation and safety hose 10 m (32 ft.), yellow	1700009001	0.3 bar 4.35 psi	1	1	1	1	1	1	1
Measurement hose 10 m (32 ft.) (self-monitoring)	1700010301	0.3 bar 4.35 psi	1	1	1	1	1	1	1

Sets 1.5 bar (21.75 psi)

For pipes 600–2,200 mm (24–86.6 inch)			600– 1,200	800– 1,600	800– 2,200
RDK 60/120	1480001901	1.5 bar 21.75 psi	1		
PDK 60/120 with duct 1 x 2" OT	1481009501	1.5 bar 21.75 psi	1		
RDK 80/160	1492000700	1.5 bar 21.75 psi		1	
PDK 80/160 with duct 1 x 4" OT	1492001300	1.5 bar 21.75 psi		1	
RDK 80/220	1492000800	1.5 bar 21.75 psi			1
PDK 80/220 with duct 1 x 4" OT	1492001400	1.5 bar 21.75 psi			1

Air test adapter

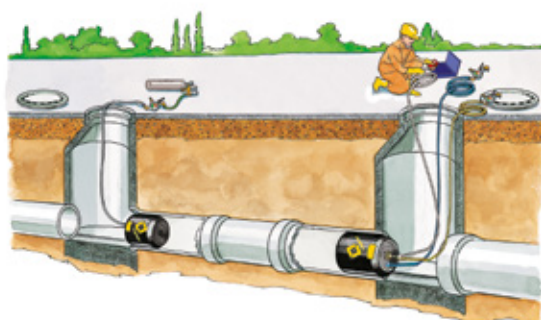
Air test adapter 2" IT	1481023400		1		
Air test adapter 4" IT	1492005500			1	1

Accessories for inflation

Inflation hose 10 m (32 ft.), yellow	1600029900	1.5 bar 21.75 psi	2	2	2
Single Fitting controller	0150005401	1.5 bar 21.75 psi	1	1	1

Additional accessories as an option

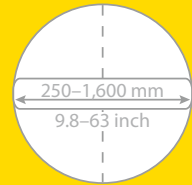
Inflation and safety hose 10 m (32 ft.), yellow	1700009001	0.3 bar 4.35 psi	1	1	1
Measurement hose 10 m (32 ft.) (self monitoring)	1700010301	0.3 bar 4.35 psi	1	1	1



Cone bags

Pipe sealing without compromises

- Flexible use in almost all pipe profiles
- Easy handling due to low weight
- Secure closure of all pipelines
- Available in three sizes from 250–1,600 mm



With the Vetter Cone bags you have a strong helper with you that reliably seals and, thanks to its conical shape, adapts to almost all profile types of round, egg, mouth, corner and kite profiles. This allows you to seal all types of pipelines even in difficult installation situations, allowing you to concentrate on your work on site.

Due to its low weight and compact transport format, the foldable barrier bag can be quickly positioned in the manhole by means of a drawbar eye. That is where it convinces with its extremely durable CR material in familiar Vetter quality.

Once positioned, it can be emptied quickly and easily without moving the bag in the pipe using a vacuum adapter and suction cup. You do not need a separate compressed air bottle and benefit from uncompromising quality "Made in Germany".



Additional with an adapter for working with quick-action coupling

Technical data

Cone Bags	Pipe diameter <i>mm/inch</i>	Length <i>mm/inch</i>	Air requirement approx. <i>litre/cu. ft.</i>	Weight approx. <i>kg/lbs</i>
KK 250–600 1420005600	250–600 9.8–23.6	1,050 41.3	433.5 15.31	4,1 9.04
KK 400–1.000 1420005700	400–1,000 15.7–39.4	1,900 74.8	2,071.2 73.14	10 22.05
KK 600–1.600 1420005000	600–1,600 23.6–63	3,180 125.2	8,429.5 297.69	24 52.92

Cone Bags:

Operating pressure: 1 bar (14.5 psi)

Counterpressure: max. 0.5 bar (7.25 psi)

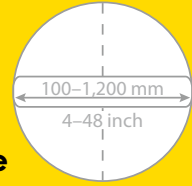


Vetter Cone bags are available in 3 sizes

Bypass bags

Simple diversion with large flow circuit

- Perfect handling
- Only 3 sizes from 100–1,200 mm (4–48 inch)
- Very light due to PE core
- Exchangeable sleeve



With bypass bags from Vetter, you can selectively drain off wastewater in front of a damaged area and return it to the intact pipeline behind it. The largest possible flow opening makes this possible and the external thread allows free selection of the connection coupling.



Corresponding fixed- and blind coupling:



Fixed coupling: 2 1/2" IT (Art. no. 1700010500)
4" IT (Art. no. 1700009900)



Blind coupling with chain: 2 1/2" (Art. no. 1700022400)
4" (Art. no. 1700012600)

Technical data

Standard test counter-pressure of 5 mWC (7.25 psi)

Bypass bags 1.5 bar (21.75 psi)	Pipe diameter mm/inch	Diameter mm/inch	Cylinder length mm/inch	Total length mm/inch	Air requirement approx. litre/cu. ft.	Weight approx. kg/lbs
PDK 10/20 PE-core 1481004401 1 x 2 1/2" OT	100–200 4–8	97 3.9	485 19.1	635 25.0	27 0.95	2.2 4.9
PDK 20/50 PE-core 1481005001 1 x 4" OT	200–500 8–20	195 7.7	550 21.7	700' 27.6'	143 5.0	7 15.4
PDK 50/120 PE-core 1481008000 1 x 4" OT	500–1,200 20–48	450 17.7	940 37	1,070' 42.1'	1,420 50.1	36.8 81.1

*including valve extension.

PDK 10/20 and PDK 20/50

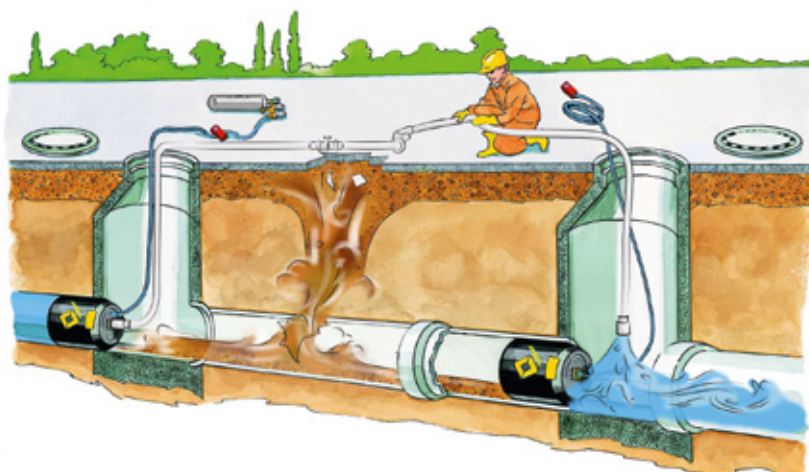


For sizes PDK 10/20 and PDK 20/50, the bypass adapters are fastened to the PE core with screws.

PDK 50/120



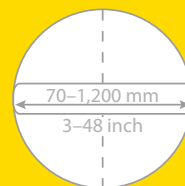
The bypass bag PDK 50/120 have the feedthroughs (also with external thread) directly in the PE core.



Pipe sealing bags CR

The oil resistant alternative to the classics

- Great handling (length/weight)
- Very flexible application
- Optionally with integrated hose
- Excellent oil and chemical resistance



CR pipe sealing bags from Vetter are made of chloroprene rubber. This makes them significantly more resistant to mineral or heating oil than our classic pipe sealing bags made of natural rubber.

The CR pipe sealing bags are also available with an integrated filling hose as an option.



Technical data

RDK 2.5 bar (36.25 psi) – test counter-pressure 10 mWC (14.5 psi),
RDK 1.5 bar (21.75 psi) – test counter-pressure 5 mWC (7.25 psi)

Pipe Sealing Bags CR		Pipe diameter <i>mm/inch</i>	Diameter <i>mm/inch</i>	Cylinder length <i>mm/inch</i>	Total length <i>mm/inch</i>	Air requirement approx. <i>litre/cu. ft.</i>	Weight approx. <i>kg/lbs</i>
RDK 7/15 1440008100	2.5 bar 36.25 psi	70–150 3–6	68 2.7	300 11.8	345 13.4	14 0.5	0.6 1.3
RDK 10/20 1440024300	2.5 bar 36.25 psi	100–200 3.9–7.9	90 3.5	250 9.84	295 11.61	25 0.9	1.1 2.4
RDK 15/30 1440008000	2.5 bar 36.25 psi	150–300 6–12	145 5.7	350 13.78	395 15.55	80 2.8	2.5 5.5
RDK 20/40 1440027100	2.5 bar 36.25 psi	200–400 7.9–15.7	195 7.7	650 25.6	700 27.6	224 8.8	3.4 7.5
RDK 30/60 1440007900	2.5 bar 36.25 psi	300–600 12–24	295 11.6	735 29	780 30.4	508 18	7.3 16.1
RDK 60/120 1480004800	1.5 bar 21.75 psi	600–1,200 24–48	580 22.8	1,320 52	1,365 53.7	2,475 87.4	27 59.6

Additional sizes can be supplied on request.

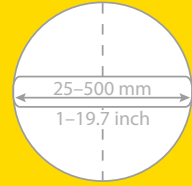


**More information about Vetter
cone bags on page 14–15.**

Lateral packers / Extended range packers

The intelligent solution that saves money

- High flexibility
- Robust cone heads



Vetter packers are the optimal solution for the rehabilitation of pipes with smaller diameters, as they are often used for building connections. The flexible construction facilitates good sliding qualities, bend flexibility and practical handling which reduces your working hours. The open safety coupling with a lock pin prevents unwanted decoupling. In addition, the entire packer has a very robust design.

Key Features Lateral Packers:

- Ideal for lateral pipe spot/point repairs
- Suitable for narrow, confined, or tight access pipelines
- Reusable with appropriate protective sheeting
- Ensures consistent and reliable resin patching in small diameter pipes

Key Features Extended Range Packers:

- Enables multiple pipe repairs with a single packer
- Ideal for spot and point repair in varied diameter pipelines
- Reusable with protective foil or sheeting
- Reduces equipment load and repair costs for contractor



Sturdy spherical heads

Technical data

Lateral packers		Pipe diameter	Diameter	Cylinder length	Total length	Repair length in largest diameter	Repair length in smallest diameter	Air requirement approx.	Weight approx.
		<i>mm/inch</i>	<i>mm/inch</i>	<i>mm/inch</i>	<i>mm/inch</i>	<i>mm/inch</i>	<i>mm/inch</i>	<i>litre/cu. ft.</i>	<i>kg/lbs</i>
25/35 1492002200	3 bar 43.5 psi	25–35 1–1.4	18 0.7	600 23.6	690 27.2	400 15.7	500 19.7	0.8 0.03	0.1 0.22
25/35 1492002300	3 bar 43.5 psi	25–35 1–1.4	18 0.7	1,000 39.4	1,090 42.9	800 31.5	900 35.4	1.3 0.05	0.15 0.33
25/35 1492002400	3 bar 43.5 psi	25–35 1–1.4	18 0.7	1,500 59.1	1,590 62.6	1,300 51.2	1,400 55.1	2.1 0.07	0.2 0.44
35/50 1492002500	3 bar 43.5 psi	35–50 1.4–2.0	25 1	600 23.6	680 26.8	380 15	520 20.5	1.6 0.06	0.3 0.66
35/50 1492002600	3 bar 43.5 psi	35–50 1.4–2.0	25 1	1,000 39.4	1,080 42.5	780 30.7	920 36.2	2.6 0.09	0.4 0.88
35/50 1492002700	3 bar 43.5 psi	35–50 1.4–2.0	25 1	1,500 59.1	1,580 62.2	1,280 50.4	1,420 55.9	4 0.14	0.5 1.1
Extended Range Packer									
100/250 1492003400	3 bar 43.5 psi	100–250 3.9–9.8	75 3	1,000 39.4	1,230 48.4	570 22.4	710 28	63 2.22	2.5 5.51
100/250 1492003500	3 bar 43.5 psi	100–250 3.9–9.8	75 3	1,500 59.1	1,730 68.1	1,070 42.1	1,210 47.6	94 3.32	3.4 7.5
100/250 1492003600	3 bar 43.5 psi	100–250 3.9–9.8	75 3	2,000 78.7	2,230 87.8	1,570 61.8	1,710 67.3	125 4.41	3.6 7.94
50/150 1492002800	3.5 bar 40.76 psi	50–150 2–5.9	45 1.8	1,000 39.4	1,170 46.1	710 28	790 31.1	23 0.81	1.5 3.31
50/150 1492002900	3.5 bar 40.76 psi	50–150 2–5.9	45 1.8	1,500 59.1	1,670 65.7	1,210 47.6	1,290 50.8	35 1.24	2.2 4.85
50/150 1492003000	3.5 bar 40.76 psi	50–150 2–5.9	45 1.8	2,000 78.7	2,170 85.4	1,710 67.3	1,790 70.5	45 1.59	2.7 5.95
70/200 1492003100	3.5 bar 40.76 psi	70–200 2.8–7.9	58 2.3	1,000 39.4	1,200 47.2	620 24.4	720 28.3	38 1.34	1.8 3.97
70/200 1492003200	3.5 bar 40.76 psi	70–200 2.8–7.9	58 2.3	1,500 59.1	1,700 66.9	1,120 44.1	1,220 48	57 2.01	2.4 5.29
70/200 1492003300	3.5 bar 40.76 psi	70–200 2.8–7.9	58 2.3	2,000 78.7	2,200 86.6	1,620 63.8	1,720 67.7	76 2.68	3.2 7.06
150/300 1492003700	2 bar 29 psi	150–300 5.9–11.8	120 4.7	1,000 39.4	1,300 51.2	570 22.4	770 30.3	75 2.65	6.1 13.45
150/300 1492003800	2 bar 29 psi	150–300 5.9–11.8	120 4.7	1,500 59.1	1,800 70.9	1,070 42.1	1,270 50	115 4.06	8 17.64
150/300 1492003900	2 bar 29 psi	150–300 5.9–11.8	120 4.7	2,000 78.7	2,300 90.6	1,570 61.8	1,770 69.7	154 5.44	12.5 27.56
200/500 1492004000	2 bar 29 psi	200–500 7.9–19.7	195 7.7	1,500 59.1	1,780 70.1	800 31.5	1,020 40.2	580 20.48	16 35.28
200/500 1492004100	2 bar 29 psi	200–500 7.9–19.7	195 7.7	2,000 78.7	2,280 89.8	1,300 51.2	1,520 59.8	690 24.37	19 41.90

Bendy packers

Bendy packers are designed for resin based patching and spot repairs in curved, misaligned, or tight-access pipe sections, capable of navigating bends of up to 90°.

These no-dig repair solutions are ideal for restoring the integrity of pipelines without the need for excavation, particularly in sections where traditional packers cannot conform to the required shape.

Key Features:

- Suitable for bends and offsets up to 90°
- Pipe diameter range: 30–50 mm to 170–220 mm
- Operating pressure: 3 bar
- Standard length: 1250 mm
- Made from special bendable rubber with embedded fabric
- Smooth-surfaced for uniform, swell-free repairs
- Enables trenchless, no-dig patch repair in curved and misaligned pipe sections
- Reusable with protective foil or sheeting

Top problems our products solve Bendy Packers:

- Repairs in curved or offset pipe sections up to 90°
- Avoiding excavation in tight, angled locations
- Quick deployment in space-restricted environments
- Saves money compared to digging



Technical data

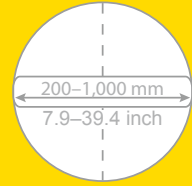
Bendy packer 3 bar/43.5 psi	Pipe Diameter mm/inch	Diameter mm/inch	Cylinder length mm/inch	Total length mm/inch	Repair length in largest diameter mm/inch	Air requirement approx. litres/cu. ft.	Weight approx. kg/lbs
Type 30/50 1492001500	30–50 1.2–2.0	24 0.9	1,250 49.2	1,350 53.1	1,110 43.7	3.2 0.11	0.3 0.66
Type 50/70 1492001600	50–70 2.0–2.8	35 1.4	1,250 49.2	1,350 53.1	930 36.6	7 0.25	0.6 1.32
Type 70/100 1492001700	70–100 2.8–3.9	55 2.2	1,250 49.2	1,350 53.1	930 36.6	16 0.57	1.6 3.53
Type 100/125 1492001800	100–125 3.9–4.9	55 2.2	1,250 49.2	1,350 53.1	930 36.6	23 0.81	2.1 4.63
Type 125/150 1492001900	125–150 4.9–5.9	74 2.9	1,250 49.2	1,350 53.1	930 36.6	31 1.09	2.4 5.29
Type 150/165 1492002000	150–165 5.9–6.5	74 2.9	1,250 49.2	1,350 53.1	930 36.6	34 1.20	4 8.82
Type 170/220 1492002100	170–220 6.7–8.7	90 3.5	1,250 49.2	1,400 55.1	930 36.6	42 1.48	9.5 20.95



Flexible packers

The adaptable solution

- Stable running gear
- High flexibility
- Adjustable chassis



Vetter flexible packers are the really flexible solution for drain reconstruction. Its design allows you to easily guide the packer through a manhole and install it in the damaged pipe. This is ensured, for example, by the spherical chassis with a light spring effect. So problem-free gliding even over offsets is no problem. The wheels are set at a 120° angle. This makes it easy to control the packer. In addition, you can adjust the chassis individually to any pipe diameter.

Flexible packers from Vetter are made of a rubber jacket that is vulcanised onto metal heads. The interior tube lets the water flow off during the renovation work and the open safety coupling with safety pin prevents unintentional disconnection.

Vetter flexible packers are available in four sizes for pipe diameters from 150 to 1,200 mm (6–47 inch) and in lengths of up to 3 m (118.1 inch).



Full flexibility and guaranteed stability



flow-through openings of the flex packers

Technical data

Up to Type 300-400: Bypass Ø 2"
From Type 400-600 on: Bypass Ø 3"

Flexpacker with wheelset	Operating pressure	Pipe Diameter	Diameter	Cylinder length	Total length	Repair length in largest diameter	Repair length in smallest diam- eter	Weight approx.
		<i>mm/inch</i>	<i>mm/inch</i>	<i>mm/inch</i>	<i>mm/inch</i>	<i>mm/inch</i>	<i>mm/inch</i>	<i>kg/lbs</i>
Type 200-300 1491044801	1.5 bar 21.75 psi	200-300 7.9-11.8	170 6.7	1,000 39.4	1,130 44.5	590 23.2	690 27.2	8.8 19.40
Type 200-300 1491066500	1.5 bar 21.75 psi	200-300 7.9-11.8	170 6.7	1,500 59.1	1,630 64.2	1,090 42.9	1,190 46.9	12.5 27.56
Type 200-300 1491046301	1.5 bar 21.75 psi	200-300 7.9-11.8	170 6.7	2,000 78.7	2,130 83.9	1,590 62.6	1,690 66.5	15 33.08
Type 200-300 1491066600	1.5 bar 21.75 psi	200-300 7.9-11.8	170 6.7	2,500 98.4	2,630 103.5	2,090 82.3	2,190 86.2	17.5 38.59
Type 200-300 1491046401	1.5 bar 21.75 psi	200-300 7.9-11.8	170 6.7	3,000 118.1	3,130 123.2	2,590 102	2,690 105.9	20 44.1
Type 300-400 1491044901	1.5 bar 21.75 psi	300-400 11.8-15.7	230 9.1	1,000 39.4	1,170 46.1	560 22	660 26	12.8 28.22
Type 300-400 1491066700	1.5 bar 21.75 psi	300-400 11.8-15.7	230 9.1	1,500 59.1	1,670 65.7	1,060 41.7	1,160 45.7	16.5 36.38
Type 300-400 1491046601	1.5 bar 21.75 psi	300-400 11.8-15.7	230 9.1	2,000 78.7	2,170 85.4	1,560 61.4	1,660 65.4	19.4 42.78
Type 300-400 1491066800	1.5 bar 21.75 psi	300-400 11.8-15.7	230 9.1	2,500 98.4	2,670 105.1	2,060 81.1	2,160 85	23 50.72
Type 300-400 1491046701	1.5 bar 21.75 psi	300-400 11.8-15.7	230 9.1	3,000 118.1	3,170 124.8	2,560 100.8	2,660 104.7	26 57.33
Type 400-600 1491045701	1.5 bar 21.75 psi	400-600 15.7-23.6	350 13.8	1,500 59.1	1,670 65.7	980 38.6	1,240 48.8	26 57.33
Type 400-600 1491059500	1.5 bar 21.75 psi	400-600 15.7-23.6	350 13.8	2,000 78.7	2,170 85.4	1,400 55.1	1,450 57.1	29 63.95
Type 600-800 1491059001	1 bar 14.5 psi	600-800 23.6-31.5	400 15.7	1,500 59.1	1,670 65.7	700 27.6	900 35.4	29 63.95
Type 800-1,000 1491058601	1 bar 14.5 psi	800-1,000 31.5-39.4	550 21.7	1,500 59.1	1,670 65.7	520 20.5	760 29.9	50 110.25

Accessories – Air pressure test and water pressure testing

Air pressure test

Air test adapter

with two MS quick-connect couplings and hose

1/2" IT 1481023600

1" IT 1481023500

2" IT 1481023400

4" IT 1492005500



Fill and safety hose, 0.3 bar (4.35 psi)

- for filling the line
- Yellow
- 10 m (32 ft.)



1700009001

Measuring hose, 0.3 bar (4.35 psi)

- for self-monitoring
- for the leak test
- Yellow
- 10 m (32 ft.)



1700010301

Water pressure testing

Fixed coupling

- D-fixed coupling
1/2" IT 1700007600

- D-fixed coupling
1" IT 1700016000

- C-fixed coupling
2" IT 1700007700

- A-fixed coupling
4" IT 1700009001



Blind coupling

- Blind coupling with chain, Size D
1700016200

- Blind coupling with chain,
Size C
1700016600

- Blind coupling with chain, Size A
1700012600



Blocking valve

- Size D
1700013200

- Size C
1700007900

- Size A
1492005400



Accessories – inflating the bag

1 bar (14.5 psi)

Inflation hose, 1 bar (14.5 psi)

- Yellow

5 m (16.4 ft.) 1600030000
 10 m (32 ft.) 1600029900



Simple controller, 1 bar (14.5 psi)

- Fitting controller

0100005201



2 bar (29 psi)

Inflation hose, 2 bar (29 psi)

- Yellow

5 m (16.4 ft.) 1600030000
 10 m (32 ft.) 1600029900



Simple controller, 2 bar (29 psi)

- Fitting controller

1492005100



1.5 bar (21.75 psi)

Inflation hose, 1.5 bar (21.75 psi)

- Yellow

5 m (16.4 ft.) 1600030000
 10 m (32 ft.) 1600029900



Simple controller, 1.5 bar (21.75 psi)

- Fitting controller

0150005401



2.5 bar (36.25 psi)

Inflation hose, 2.5 bar (36.25 psi)

- Yellow

5 m (16.4 ft.) 1600030000
 10 m (32 ft.) 1600029900



Inflation and safety hose, 2.5 bar (36.25 psi)

- Yellow
- 10 m (32 ft.)

0250005800



Inflation and safety hose, 1.5 bar (21.75 psi)

- Yellow
- 10 m (32 ft.)

0150005500



Simple controller, 2.5 bar (36.25 psi)

- Fitting controller

0250005701



Foot pump 2.5 bar (36.25 psi)

- with safety valve

0250005300



Accessories – inflating the bag

3 bar (43.51 psi)

Inflation hose, 3 bar (43.51 psi)

- Yellow

5 m (16.4 ft.) 1600030000

10 m (32 ft.) 1600029900



Simple controller, 3 bar (43.51 psi)

- Fitting controller

1492005200



3.5 bar (50.8 psi)

Inflation hose, 3.5 bar (50.8 psi)

- Yellow

5 m (16.4 ft.) 1600030000

10 m (32 ft.) 1600029900



Simple controller, 3.5 bar (50.8 psi)

- Fitting controller

1492005300



Cone bag accessories

Inflation hose, 1 bar (14.5 psi)

- Yellow

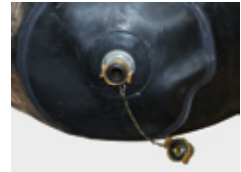
5 m (16.4 ft.) 0100005800

10 m (32 ft.) 0100005700



Adaptor claw to quick-action coupling

1420005800



Single controller, 1 bar (14.5 psi)

- Fitting controller

0100005600



Accessories – inflating the bag

Accessories for inflating

Air supply hose, 1 bar (14.5 psi)

- Green
- 10 m (32 ft.)
- with cut-off valve



1600013601

Hand air pump

- 520 ccm/lift

1600008700



Adapter

- for portable compressor/permanent compressed air network



1600008200

Foot pump

- 420 ccm/lift

1600009400



Tyre valve

1600008000



Adapter

- for construction compressors

1600012000



Vetter resistance list

Convincing with transparency

Please note: The information in our resistance list is based on laboratory tests and empirical values. A material reacts faster to chemicals under expansion than at rest. That means the greater the expansion, the lower the chemical resistance. In addition, the resistance also depends on the thickness of the material, which influences diffusion. Furthermore, other variable factors, such as temperature, intensity or exposure time, also have an influence on the durability.

The values given may therefore differ in the concrete application scenario and are to be understood here only as an indication. We are glad to provide material samples for your own investigations of the chemical resistance.

Key

+ resistant

- not resistant

o conditionally resistant

n.d. no data

Temperature resistance

Products	Cold resistance	Cold flexible	Heat resistance, long term	Heat resistance, short time
Mini Test Sealing Bags				
Pipe Sealing Bags 1.5 bar (21.75 psi)				
Pipe Sealing Bags 2.5 bar (36.25 psi)				
Test Sealing Bags 1.5 bar (21.75 psi)				
Test Sealing Bags 2.5 bar (36.25 psi)				
Bypass Bags 1.5 bar (21.75 psi)				
Pipe Sealing Bags CR	-40 °C	-20 °C	+90 °C	+115 °C
High Pressure Pipe Sealing Bags				
Test Sealing Bags for Gullies				
Protection Sleeve				
Lateral packers				
Flexible packers				
Pipe Sealing Bags 0.5 bar (7.25 psi)	-40 °C	-20 °C	+50 °C	--
Test Sealing Bags 0.5 bar (7.25 psi)	-30 °C	--	+70 °C	--
Cone Bags 1 bar (14.5 psi)	-20 °C	--	+55 °C	--
Controller: Aluminium- and fitting	-20 °C	--	--	+55 °C
Rubber hoses	-40 °C	-30 °C	+90 °C	--

Material list

Products	Material	Support material
Mini Pipe Sealing Bags		
High Pressure Pipe Sealing Bags	NR	Nylon cord
Protection Sleeve		
Lateral packers		
Flexible packers		
Mini Test Sealing Bags	NR	NR
Pipe Sealing Bags 1.5 bar (21.75 psi)		
Pipe Sealing Bags 2.5 bar (36.25 psi)		
Test Sealing Bags 1.5 bar (21.75 psi)	NR	Nylon cord/Aramid
Test Sealing Bags 2.5 bar (36.25 psi)		
Bypass Bags 1.5 bar (21.75 psi)		
Pipe Sealing Bags 0.5 bar (7.25 psi)	CR/NR	Nylon cord/Aramid
Test Sealing Bags 0.5 bar (7.25 psi)		
Pipe Sealing Bags CR		
Cone Bags 1 bar (14.5 psi)	CR	Nylon cord
Test Sealing Bags for Gullies		
Inflation hoses and air supply hoses (outside)	EPDM	Polyester

We are glad to provide material samples for your own investigations of the chemical resistance.

Resistance list*

Material designation	CR	NR	EPDM
Aceton	o	+	-
Acetylen	+	+	-
Alum, aqueous	+	+	-
Aluminium chloride	+	+	+
Aniline	-	n.d.	n.d.
ASTM oil 1	o	-	-
Petrol	o	-	n.d.
Benzene	-	-	-
Boracic acid	+	+	+
Bromine (moist)	-	-	-
Butyric acid	-	-	n.d.
Chlorine gas (moist)	-	-	n.d.
Chlorine, wet	o	-	o
Diesel fuel	o	-	-
Iron chloride	+	+	+
Petroleum	o	-	-
Acetic acid	o	+	o
Fatty acids	+	o	-
Formaldehyde	+	+	+
Glucose	+	+	+
Heating oil	+	-	-
Potassium chloride	+	+	+
Calcium chloride	+	+	+
Calcium nitrate	+	+	+
Carbon dioxide	+	+	+
Carbon monoxide	+	+	+
Copper sulphate	+	+	+
Glue	+	+	+
Methyl chloride	-	-	o
Seawater	+	+	n.d.
Mineral oils	+	-	-
Sodium carbonate	+	+	-
Ozone	+	-	+
Paraffin	+	-	-
Perchloric acid	o	n.d.	+
Phenol (aqueous)	-	-	+
Phosphoric acid (concentrated)	-	-	-
Mercury	+	+	+
Nitric acid (fuming)	-	-	-
Sulphur dioxide (dry)	-	o	n.d.
Sulphuric acid (50%)	+	-	-
Nitrogen	+	+	+
Carbon tetrachloride	-	-	-
Animal fats	+	-	+
Toluene	-	-	-

*Subject to change without notice | + resistant | o conditionally resistant | - not resistant | n.d. no data

Vetter GmbH

Blatzheimer Str. 10–12
53909 Zülpich
Germany

Sales

Tel: +49 (0) 22 52 / 30 08-0

Fax: +49 (0) 22 52 / 30 08-590

Mail: vetter.info@idexcorp.com

vetter.de

© Copyright | 04-2026 | Vetter GmbH | Changes and errors excepted.



Version: 04.2026 | 04